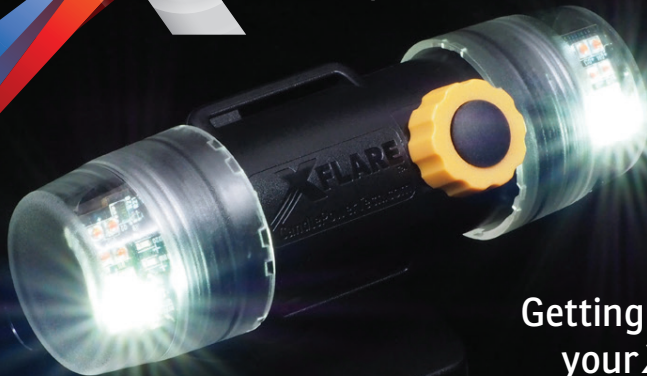




# FLARE™

Ultimate Light & Strobe



***A Spectrum of Versatility***

**XFlare.net**

Getting familiar with  
your **XFlare Multi**



or **XFlare Response**



**PLEASE READ ALL OF THE INSTRUCTIONS FIRST.**

**TAKE 10 MINUTES TO LEARN HOW TO USE YOUR NEW TOOL**

*Please refer to usage videos on our website [www.XFlare.net](http://www.XFlare.net)*

**WARNING: Do not look directly into the LEDs**

### **General Instructions:**

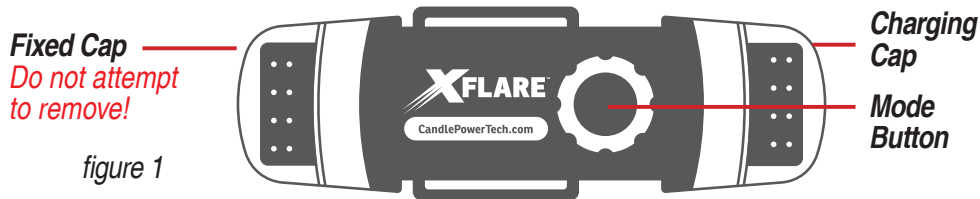
**I. Charge your XFlare:** Remove end cap on the end closest to the **mode button** (see *figure 1*). This is the location of the mini-USB connector. Charge via this port and the supplied cable—take care not to touch the LEDs. It takes approximately 5 hours to fully charge from full discharge. Note the charge LED located on the opposite end to the charging end. When charging, the LED will glow red, when charged it will glow green.

**II. Accessory insertion and removal:** All supplied mounts snap into the landing on the opposite side of the mode button location. Slide the desired mount into the landing until you hear the tab “click” into place. For removal, apply slight upward pressure to the tab while pushing the accessory out of the accessory landing. **IT IS NOT NECESSARY TO APPLY MUCH UPWARD FORCE ON THE TAB.**

**III. Turning on and cycling between modes:** Quickly push and release the operating/programming button—the mode button—to cycle from one mode to another. You have up to 4 modes to cycle through: Low Flood, High Flood, Low Strobe and High Strobe.

**IV. Turning off your XFlare:** Hold the mode button for 1-3 seconds then release.

**V. Turning off the strobe feature:** Put your **XFlare** in low strobe mode FIRST, then press and hold the mode button until ALL RED LEDs flash, then release the mode button. Strobe is now disabled and the light is now a floodlight only. To turn the strobe feature back on re-program your **XFlare** as follows.



XFlare™ is patent pending and a trademark of Candlepower Technology, LLC

## II. Programming your *XFlare*—READ FIRST, then program.

Programming is done sequentially, one step at a time. While in program mode the *XFlare* will cycle between programming steps asking you to pick first your floodlight color and then two strobe light colors. Select a color via the mode button by quickly pressing and releasing the mode button until you land on the color you desire then let the *XFlare* cycle to the next step, where you pick your first strobe color, then the final step picking your second strobe color. Once you pick your three colors the *XFlare* will shut off on its own.

Keep in mind that once the *XFlare* is in programming mode you will have to respond quickly or the *XFlare* will move on without you.

Total time to program the *XFlare* is about 15 seconds—5 seconds for each color selection.

All programming steps are done via the **mode button** noted in *figure 1*.

**Helpful hint on programming:** You cannot hurt the *XFlare* while in program mode.

If you get confused, watch your **XFlare** program itself.

**Turn on your XFlare:** Quickly push and release the mode button. Your **XFlare** must be “ON” and in **LOW floodlight mode** in order to program.

Press and HOLD the mode button until all the LEDs on both ends, light in sequence then RELEASE the mode button. You are now in **program mode**. Your **XFlare** will ask three questions via light signals. Watch it program itself first.

**Question 1:** *What floodlight color do you want?* This first programming step is indicated with both ends rapidly flashing white. Toggle the mode button to the color you want, then wait for next question.

**Question 2:** *What is your first strobe color?* This second step is indicated with white LEDs rapidly flashing on the left end only (refer to *figure 1*). Toggle to the color you want then wait for the next question.

**Question 3:** *What is your second strobe color?* This final step in programming your **XFlare** is indicated by white LEDs rapidly flashing on the opposite end,

or right end only (refer to *figure 1*). Toggle to the color you want then wait for the unit to turn off. Your **XFlare** is now programmed and ready for use.

## Programming Quick Start Guide

*(Light must be on & in low floodlight mode to program)*

1. Press mode button to turn unit on. Hold unit with button facing you and to the right as noted in *figure 1*.
2. Press mode button until all LEDs illuminate in sequence then release.
3. Rapidly flashing white LEDs on *both* ends—choose your floodlight color by pulsing mode button. Wait for next step.
4. Rapidly flashing white LEDs on *one* end, choose first strobe color by pulsing and releasing mode button, then wait for next step.
5. Rapidly flashing white LEDs on the *opposite* end, choose second strobe color by pulsing and releasing mode button. Wait till **XFlare** turns off and you're done.
6. **Your XFlare is ready for use.**

The **XFlare™** can be programmed and operated in two Modes:  
**Flood Light (FL) Only**, or **Flood Light and Alternating Strobe (FL/AS)**.

### Flood Only (FL) Color Programming Options

- a. ○ ○ **WHITE** only
- b. ● ● **GREEN** only or ● ● **BLUE** only (● **XFlare Multi** ● **XFlare Response**)
- c. ● ● **AMBER** only (*good for preserving night vision, road flare, etc.*)
- d. ● ● **RED** only (*good for night vision, cockpit lighting, road flare, etc.*)
- e. ● ● **GREEN** one end/**RED** other end (*boat navigation light mode, XFlare Multi*)

### Flood/Alternating Strobe (FL/AS) Color Programming Options

All the above options for (FL) and:

- a. (AS) **WHITE/WHITE**
- b. (AS) **WHITE/GREEN** (or **BLUE**)
- c. (AS) **WHITE/AMBER**
- d. (AS) **WHITE/RED**
- e. (AS) **GREEN/GREEN** (or **BLUE/BLUE**)
- f. (AS) **AMBER/GREEN** (or **BLUE**)
- g. (AS) **AMBER/AMBER**
- h. (AS) **AMBER/RED**
- i. (AS) **RED/GREEN** (or **BLUE**)
- j. (AS) **RED/RED**

**WARNING: XFlare** uses powerful LEDs— **avoid looking directly into the light!**

**WARNING:** Refer to your local laws when choosing light colors. You could be in violation of local laws—**it is up to you to remain legal.**

**WARNING: XFlare** contains a Lithium-ION battery—**dispose per local regulations.**

### Key Features:

- 4 Programmable Floodlight colors
- 10 Programmable Strobe Color Combinations (single or two alternating colors)
- Boat Bow Navigation light (XFlare Multi model)
- LiION battery with a shelf life of over 10 years.
- Charge via standard mini-USB wall charger or computer using supplied cable
- Charge LED indicator located on opposite end of charging port
- Submersible to 60 feet
- Unlimited mounting options—fully compatible with GoPro Mounts
- One-year warranty against manufacturing defects

**More information, tech specs and instructional videos: [XFlare.net](http://XFlare.net)**

**Customer Service: 814-826-8276** © 2016 Candlepower Technology, LLC. All rights reserved.